

# PRODUCT INFORMATION PACKET

Model No: 048A11O1352

Catalog No: X020

Fan and Blower Motor, 0.50 HP, 1 Ph, 60 Hz, 277 V, 1200 RPM, 48Y Frame, OPAO



Regal and Marathon are trademarks of Regal Rexnord Corporation or one of its affiliated companies.  
©2024 Regal Rexnord Corporation, All Rights Reserved. MC017097E

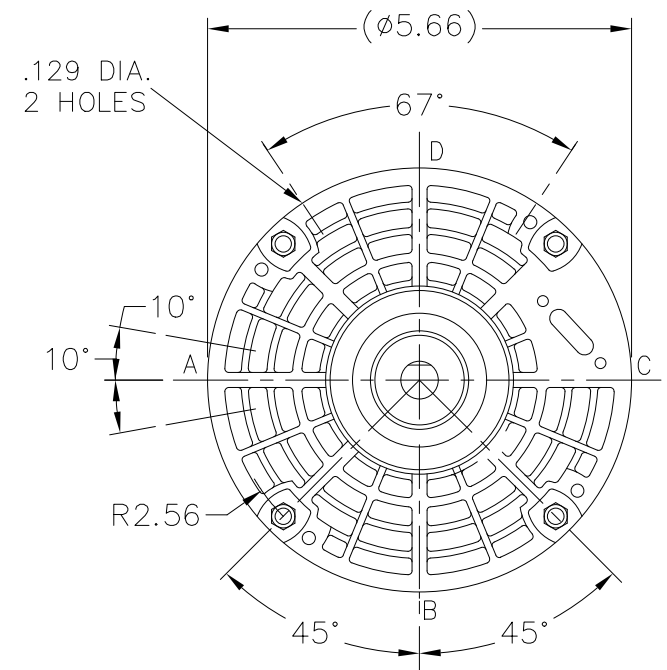
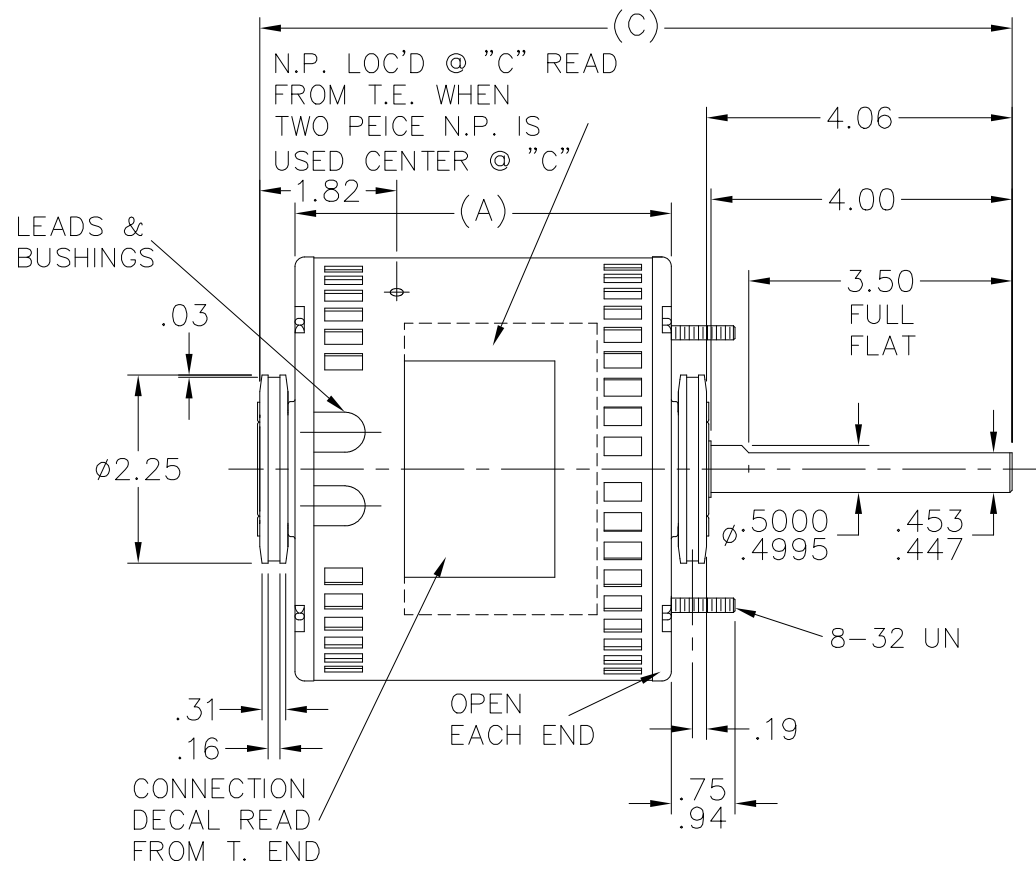
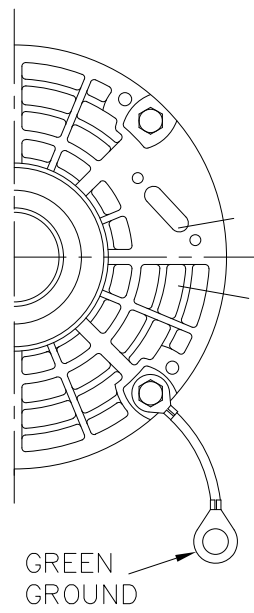
### Nameplate Specifications

Phase	1	Output HP	0.50 Hp
Output KW	0.37 kW	Voltage	277 V
Speed	1075 rpm	Service Factor	1.00
Frame	48Y	Enclosure	Open Air Over
Thermal Protection	Automatic	Efficiency	69 %
Ambient Temperature	40 °C	Frequency	60 Hz
Current	2.2 A	Power Factor	85.9
Duty	Continuous	Insulation Class	B
Design Code	NO DESIGN CODE	KVA Code	D
Drive End Bearing Size	6203	Opp Drive End Bearing Size	6203
UL	Recognized	CSA	Y
CE	N	IP Code	10
Number of Speeds	3		

### Technical Specifications

Electrical Type	Permanent Split Capacitor	Starting Method	Across The Line
Poles	6	Rotation	Selective Counterclockwise
Resistance Main	0 Ohms	Mounting	Resilient Ring - Extended Studs
Motor Orientation	Horizontal	Drive End Bearing	Ball
Opp Drive End Bearing	Ball	Frame Material	Rolled Steel
Shaft Type	Single Special Extension	Overall Length	10.50 in
Frame Length	5.00 in	Shaft Diameter	0.500 in
Shaft Extension	4.06 in	Assembly/Box Mounting	F1 ONLY
Outline Drawing	A-SS403608-500	Connection Drawing	6906493

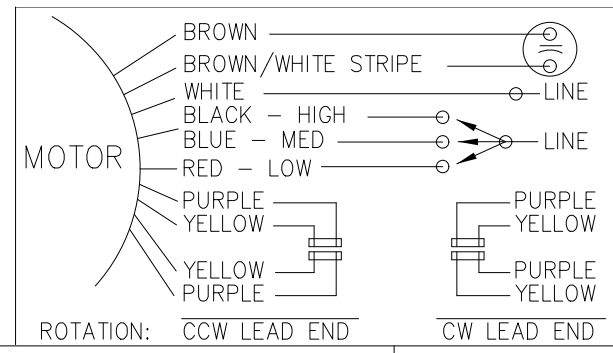
TERM. END



DASH	FR.	C	A
400	48Y	10.00	5.00
475	48Y	10.25	5.25
500	48Y	10.50	5.50
525	48Y	10.75	5.75

10/07/2008  
10/07/2008  
10/20/2008

LEAD DESCRIPTION:  
 1 WHITE, 1 BLACK, 1 BLUE, & 1 RED LEAD WITH .50 BARE WIRE STRIP. 30.00" LONG.  
 2 BROWN LEADS WITH .25 FLAG-TYPE QUICK CONNECTS, 30.00" LONG. BROWN/WHITE MARKED LEAD IS COMMON TO WHITE.  
 REVERSING LEADS ARE MOLDED INTO MATING PULL-APART PLUGS. 1 YELLOW & 1 PURPLE LEAD PER PLUG. 5.00" LONG.  
 GREEN LEAD WITH TERM. FOR #10 SCREW 12.00" LONG.



NO.	REVISION	BY & DATE	CHK	TOLERANCES UNLESS SPECIFIED		FINISH
				DEC.	INCHES	
				.X	±.1	
03	CHG FROM MARATHON TO RRX TEMPLATE PER ECR-0233451	MD 5/3/2024	DS	.XX	±.03	TITLE OUTLINE
02	FEW MORE DASH VALUES ADDED.	SP 7/7/2008	NB	.XXX	±.005	
01	DASH VALUE ADDED.	SP 05-20-2008	NB	.XXXX	±.0005	MAT'L.
				ANG	±7'30"	

**Regal Rexnord** Regal Beloit America, Inc.

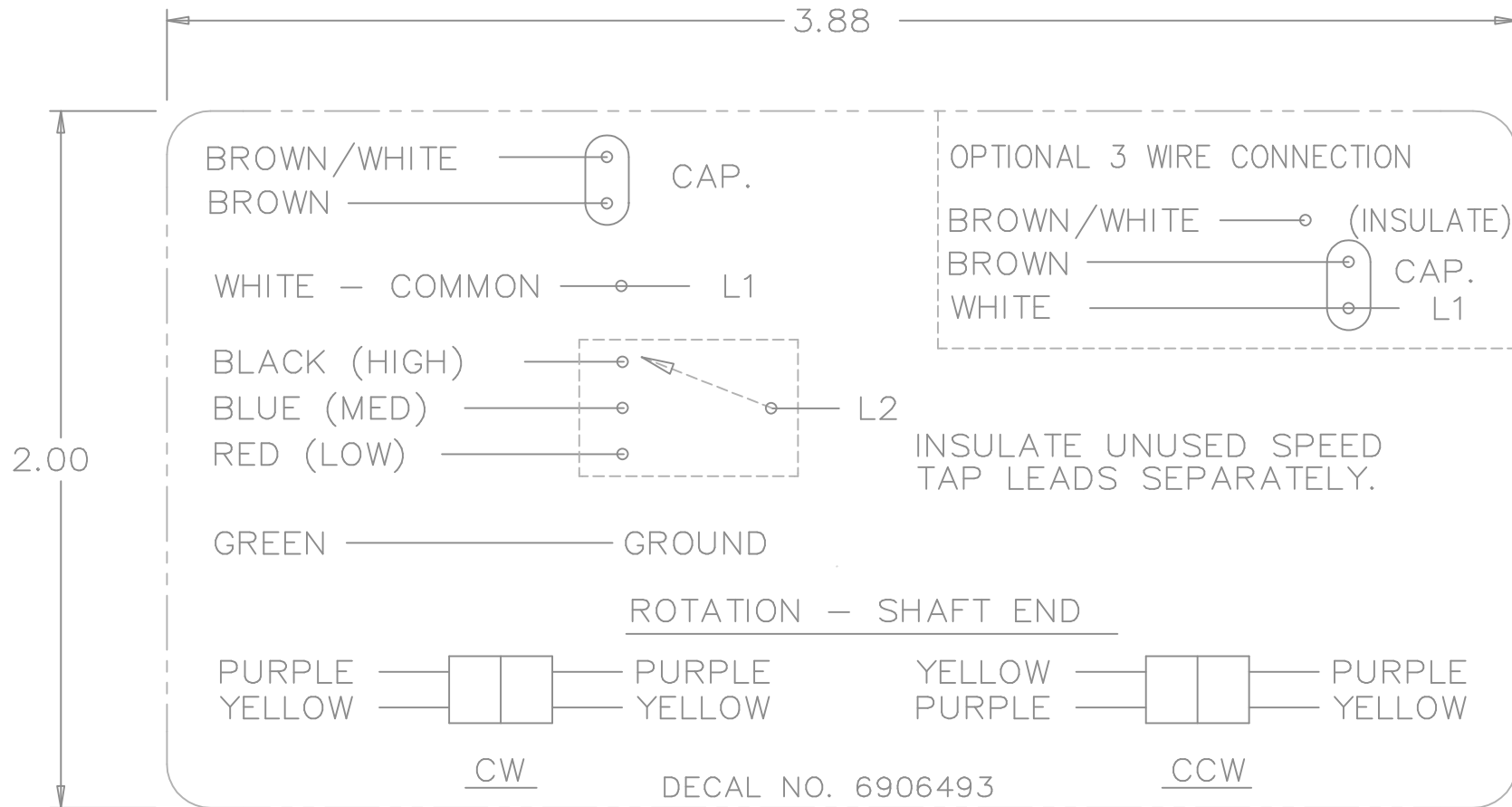
DRAWN	NB 05-15-2007
CHK	VL 05-20-2007
APPD	VL 05-20-2007
SCALE	3=8
REF	SS75119
FMF	MU79124
PREV	

THIS DRAWING IN DESIGN AND DETAIL IS OUR PROPERTY AND MUST NOT BE USED EXCEPT IN CONNECTION WITH OUR WORK ALL RIGHTS OF DESIGN AND INVENTION ARE RESERVED THIS IS AN ELECTRONICALLY GENERATED DOCUMENT - DO NOT SCALE THIS PRINT

RFP 05-20-2007  
DIST WP

CAD FILE ss403608

SIZE A DRAWING NO. SS403608 PAGE OF 03



				TOLERANCES UNLESS SPECIFIED		REGAL-BELOIT <i>Motor Technologies</i>	DRAWN MRB 04-16-1998				
				DEC.	INCHES		CHK	ML	04-22-1998		
				.X	±.1		APPD	GK	04-22-1998		
3	REMOVED 'MARATHON ELECTRIC' CN 35106	DRS 05-01-2002	TOM	.XX	±	TITLE CONNECTION DECAL	SCALE	1=1			
2	PART NAME WAS CONNECTION DIAGRAM CN 25669	MRB 04-25-1998		.XXX	±.005		REF				
1	NEW DRAWING CN 25669	MRB 04-22-1998		.XXXX	±.0005	MAT'L.	FMF				
NO.	REVISION	BY & DATE	CHK	ANG	±	FINISH	PREV				
THIS DRAWING IN DESIGN AND DETAIL IS OUR PROPERTY AND MUST NOT BE USED EXCEPT IN CONNECTION WITH OUR WORK ALL RIGHTS OF DESIGN AND INVENTION ARE RESERVED THIS IS AN ELECTRONICALLY GENERATED DOCUMENT - DO NOT SCALE THIS PRINT				RFP	CAD FILE 6906493		SIZE	DRAWING NO.	PAGE	OF	REV.
				DIST	WP		A	6906493			3



\*\* Subject to change without notice.



**MARATHON ELECTRIC CORPORATION**  
TYPICAL PERFORMANCE CURVE for AC MOTOR

Customer

Curve at

277

Volts

HP 0.50

PHASE 1

Model No 48A11O1352

60

HZ

VOLTS 277

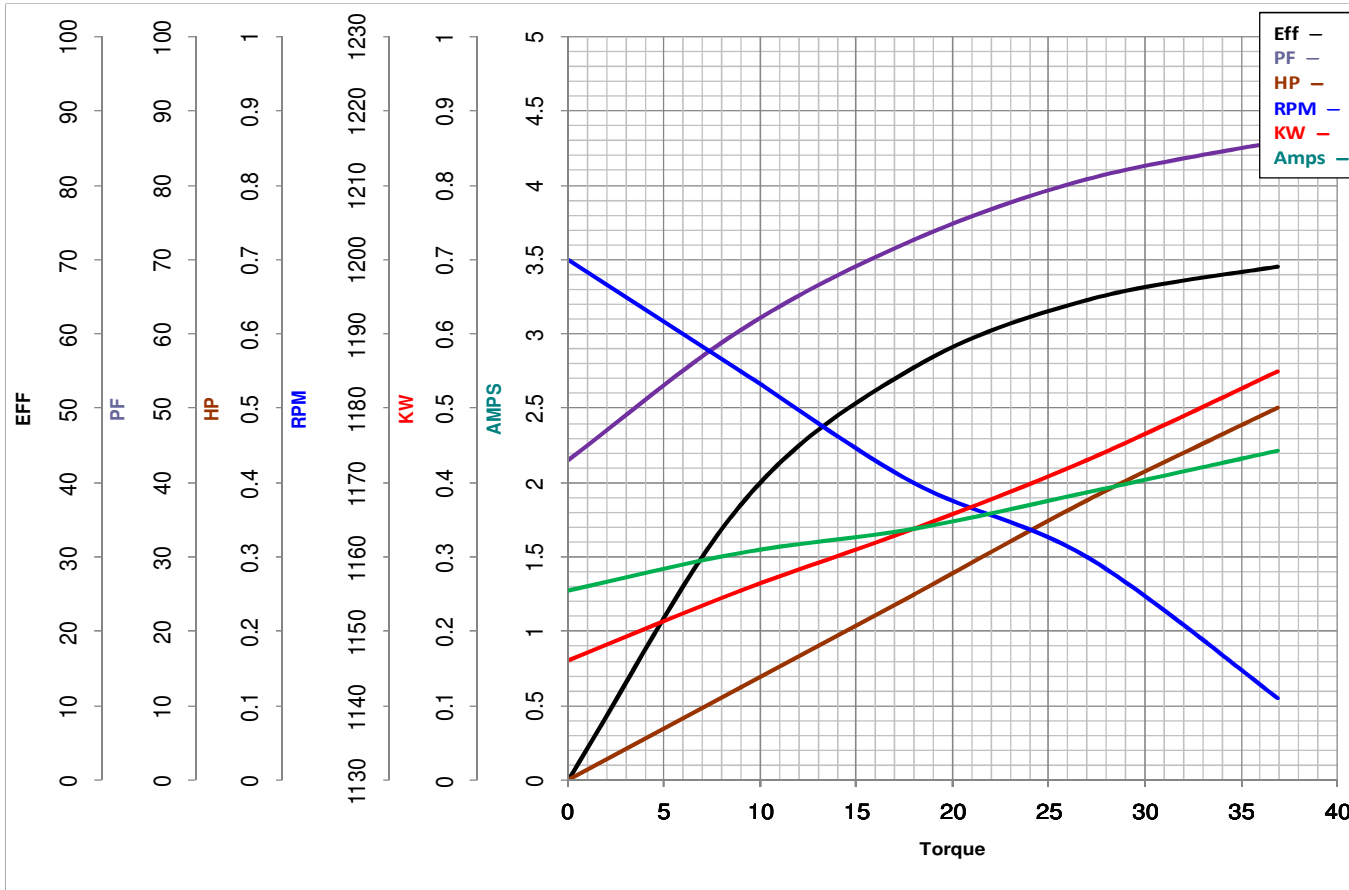
0.5

HP

Catalog No X020

HZ 60

RPM 1075



Torque in Oz.Ft

FL TORQUE 36.9 Oz.Ft  
BD TORQUE 64.4 Oz.Ft  
LR TORQUE 11.8 Oz.Ft

FL AMPS 3.6  
PU TORQUE 9.8 Oz.Ft  
LR AMPS 7.49

WINDING PE4861648-4

Date 1/18/2019